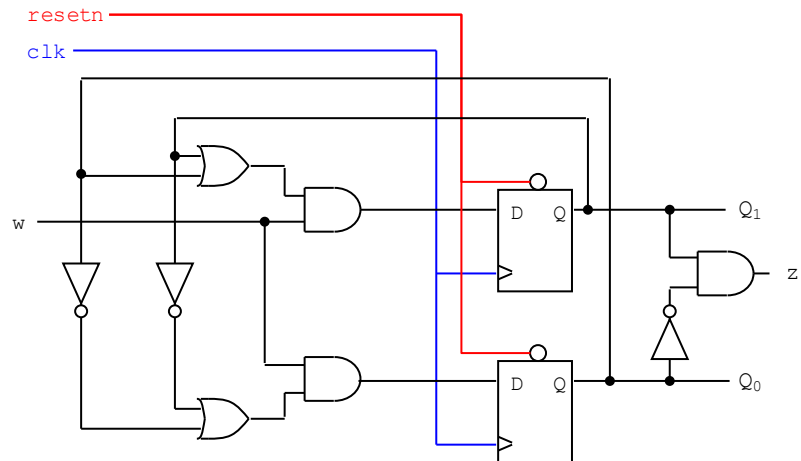


Quiz 4

(November 27th @ 5:30 pm)

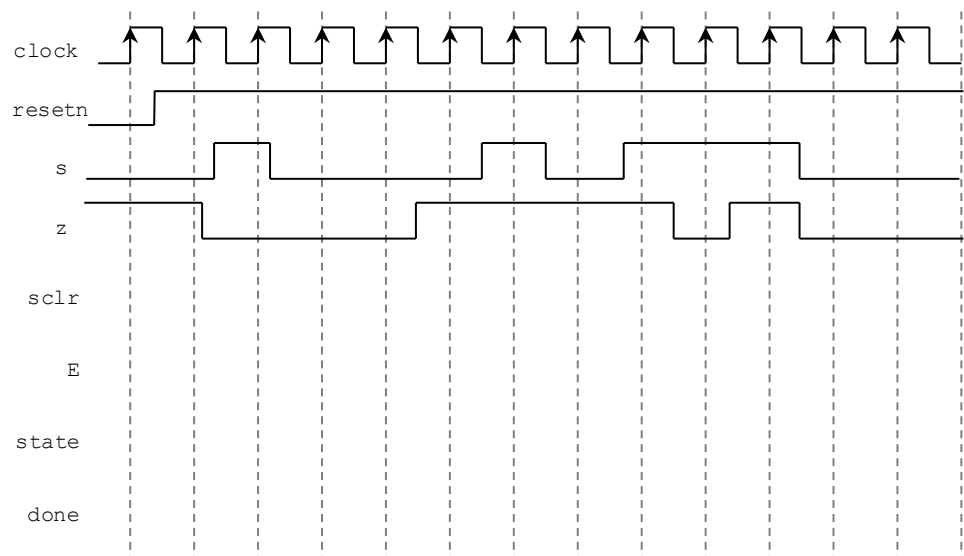
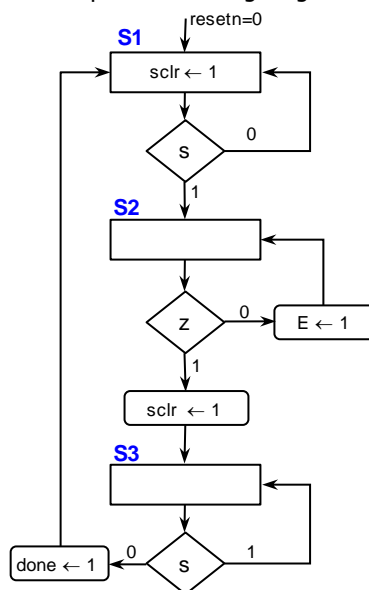
PROBLEM 1 (35 PTS)

- Provide the Excitation equations ((including the Boolean equation for z) and the Excitation Table of the following FSM:



PROBLEM 2 (35 PTS)

- Complete the timing diagram of the following FSM (represented in ASM form):



PROBLEM 3 (30 PTS)

- Sequence detector: Draw the state diagram (any representation) of an FSM with input x and output z . The detector asserts $z = 1$ when the sequence 0110 is detected. Right after the sequence is detected, the circuit looks for a new sequence.